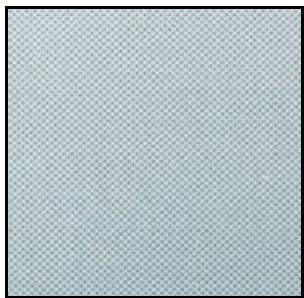


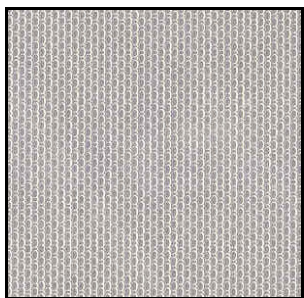
## PATTERN ROLLS

### ***MICRO LINEN***



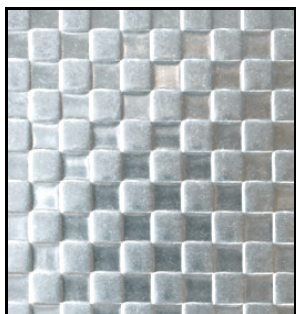
<b>MATERIALS:</b>	Stainless steel (1.4016; 1.4301; 1.4404)
<b>EMBOSSING TYPE:</b>	One side (FEMALE/FLATE)
<b>WIDTH:</b>	1250mm Max
<b>THICKNESS:</b>	0,8 mm to 1,5 mm
<b>TYPE OF LINE:</b>	COIL to COIL

### ***LINEN***



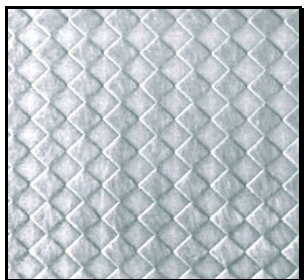
<b>MATERIALS:</b>	Stainless steel (1.4016; 1.4301; 1.4404)
<b>EMBOSSING TYPE:</b>	One side (FEMALE/FLATE)
<b>WIDTH:</b>	1250mm Max
<b>THICKNESS:</b>	0,8 mm to 1,5 mm
<b>TYPE OF LINE:</b>	COIL to COIL

### ***SQUARES***



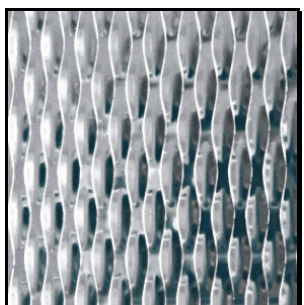
<b>MATERIALS:</b>	Stainless steel (1.4016; 1.4301; 1.4404)
<b>EMBOSSING TYPE:</b>	One side (FEMALE/FLATE)
<b>WIDTH:</b>	1250mm Max
<b>THICKNESS:</b>	0,8 mm to 1,5 mm
<b>TYPE OF LINE:</b>	COIL to COIL

### ***RHOMBOIDS (square 45°)***



<b>MATERIALS:</b>	Stainless steel (1.4016; 1.4301; 1.4404)
<b>EMBOSSING TYPE:</b>	One side (FEMALE/FLATE)
<b>WIDTH:</b>	1250mm Max
<b>THICKNESS:</b>	0,8 mm to 1,5 mm
<b>TYPE OF LINE:</b>	COIL to COIL

### ***5WL (I-3041)***



<b>MATERIALS:</b>	Stainless steel (1.4016; 1.4301; 1.4404)
<b>EMBOSSING TYPE:</b>	Double side (MALE/FEMALE)
<b>WIDTH:</b>	1250mm Max
<b>THICKNESS:</b>	0,3 mm to 1,5 mm
<b>TYPE OF LINE:</b>	COIL to COIL